



THE LAND ROVER COLLECTION



ABOVE & BEYOND



CONTENTS

THE LIFESTYLE COLLECTION	05
MEN'S APPAREL	08
WOMEN'S APPAREL	16
GIFTS AND LIFESTYLE	20
LUGGAGE	28
SUNGLASSES	32
RANGE ROVER COLLECTION	34
THE ABOVE AND BEYOND COLLECTION	45
MEN'S AND WOMEN'S APPAREL	48
DOG RANGE	66
ACCESSORIES	72
MODEL CARS	86
THE HERITAGE COLLECTION	93
MEN'S APPAREL	96
ACCESSORIES	98
DOG RANGE	108

EQUIP YOURSELF FOR THE ALL-TERRAIN LIFESTYLE. WITH ACCESSORIES AND APPAREL THAT TAKE LAND ROVER DESIGN INTO NEW TERRITORY. FEATURING EVERYTHING FROM CLASSIC CHRONOGRAPHS TO COLLECTORS' EDITION SCALE MODELS, IT'S A RANGE THAT'S RUGGED AND STYLISH. INSPIRED BY THE LAND ROVER SPIRIT OF ADVENTURE. AND BUILT TO GO THE DISTANCE.



ABOVE & BEYOND



THE LIFESTYLE COLLECTION



ABOVE & BEYOND

A man with a beard and short hair, wearing a blue zip-up jacket, stands leaning against a large, textured stone wall. He is looking off to the side. The background shows a blurred outdoor setting with a railing and a building.

THE LIFESTYLE COLLECTION

LIVE ALL TERRAIN

Whether you're escaping the city or exploring it, the Land Rover collection is at home in every terrain. Distinctive and well crafted, it's a range of apparel and accessories designed for life, wherever it's lived.

MEN'S APPAREL

The all-terrain spirit of Land Rover continues in our menswear collection. Instilled with the same unrivalled versatility, it's ready for anywhere.

MEN'S HOODED RAIN JACKET

Take shelter seriously with this water-resistant jacket. Lined with breathable mesh, it features an adjustable hood and Land Rover perforation detailing and chamfering throughout. Finished with taped seams and Durable Water Repellent (DWR[®]) coating.

Navy - \$300

XS	51LGJM452NVB	XL	51LGJM452NVF
S	51LGJM452NVC	XXL	51LGJM452NVG
M	51LGJM452NVD	XXXL	51LGJM452NVH
L	51LGJM452NVE	XXXXL	51LGJM452NV3





MEN'S MODERN DRIVER'S JACKET

Be ready for every kind of road. This contemporary driver's jacket offers incredible versatility. Features quilted shoulders, branded snaps to the cuffs and a brushed-metal effect wordmark tag. Water-resistant zips and DWR® coating.

Black - \$190

XS	51LGJM450BKB	XL	51LGJM450BKF
S	51LGJM450BKC	XXL	51LGJM450BKJ
M	51LGJM450BKD	XXXL	51LGJM450BKH
L	51LGJM450BKE	XXXXL	51LGJM450BK3



MEN'S ZIP UP SOFTSHELL JACKET

Softshell made from a nylon elastane mix for ultimate protection and mobility. Features laser-cut Land Rover perforation detailing, and chamfering. With storm cuffs, a concealed hood and microfibre lined pockets for added warmth.

Navy - \$170

XS	51LGJM451NVB	XL	51LGJM451NVF
S	51LGJM451NVC	XXL	51LGJM451NVG
M	51LGJM451NVD	XXXL	51LGJM451NVH
L	51LGJM451NVE	XXXXL	51LGJM451NV3



MEN'S CLASSIC SHIRT

Smart button-down collar shirt made from an easy-care cotton mix. Features welt pocket with pen section and tonal Land Rover wordmark. Contrast detailing to the buttons, placket, inner lining and cuffs.

Grey - \$100

XS	51LGSM453GYB	XL	51LGSM453GYF
S	51LGSM453GYC	XXL	51LGSM453GYG
M	51LGSM453GYD	XXXL	51LGSM453GYH
L	51LGSM453GYE	XXXXL	51LGSM453GY3

MEN'S APPAREL



OVAL BADGE MESH BACK CAP

Comfortable and breathable cap with oval badge to the front. Features contrast piping and eyelets, Land Rover wordmark tape to the interior, rear mesh panels and an adjustable snapback.

Green - 51LGCH489GNA
\$50



WORDMARK CAP

Two-tone cap with Land Rover wordmark. Features contrast peak and eyelets, wordmark tape to the interior and a branded metal adjuster.

Navy - 51LGCH455NVA
\$40



MEN'S ACCENT COLLAR POLO SHIRT

100% cotton piqué polo shirt with contrast tipping to the collar and cuffs. Features Land Rover wordmark to the chest, concealed buttons, and a side tab with Land Rover perforation detailing.

Grey - \$70

XS	51LGPM456GYB	XL	51LGPM456GYF
S	51LGPM456GYC	XXL	51LGPM456GYG
M	51LGPM456GYD	XXXL	51LGPM456GYH
L	51LGPM456GYE	XXXXL	51LGPM456GY3

MEN'S ACCENT COLLAR POLO SHIRT

100% cotton piqué polo shirt with contrast tipping to the collar and cuffs. Features Land Rover wordmark to the chest, concealed buttons, and a side tab with Land Rover perforation detailing.

Navy - \$70

XS	51LGPM456NVB	XL	51LGPM456NVF
S	51LGPM456NVC	XXL	51LGPM456NVG
M	51LGPM456NVD	XXXL	51LGPM456NVH
L	51LGPM456NVE	XXXXL	51LGPM456NV3

MEN'S RELIEF MAP T-SHIRT

A cotton jersey crew neck T-shirt with high build topography graphic. Features Land Rover wordmark, twin-needle stitching to the hem and sleeves and a side tab with Land Rover perforation detailing.

Grey - \$50

XS	51LGMT457GYB	XL	51LGMT457GYF
S	51LGMT457GYC	XXL	51LGMT457GYG
M	51LGMT457GYD	XXXL	51LGMT457GYH
L	51LGMT457GYE	XXXXL	51LGMT457GY3

MEN'S RELIEF MAP T-SHIRT

A cotton jersey crew neck T-shirt with high build topography graphic. Features Land Rover wordmark, twin-needle stitching to the hem and sleeves and a side tab with Land Rover perforation detailing.

Navy - \$50

XS	51LGMT457NVB	XL	51LGMT457NVF
S	51LGMT457NVC	XXL	51LGMT457NVG
M	51LGMT457NVD	XXXL	51LGMT457NVH
L	51LGMT457NVE	XXXXL	51LGMT457NV3

WOMEN'S APPAREL

Always effortlessly stylish. Now enhanced with smart thermal technology. This collection of womenswear breaks new ground, wherever you wear it.

WOMEN'S QUILTED VEST

A tapered fit vest designed to retain your body heat. Features thermal insulation, heat-welded panels and side pockets. With geometric graphic detail to the inner lining and upper back, silicone sports zippers and printed Land Rover wordmark to the chest. Water-resistant with DWR® coating.

Navy - \$180

8	51LGJW487NVI	16	51LGJW487NVM
10	51LGJW487NVJ	18	51LGJW487NVN
12	51LGJW487NVK	20	51LGJW487NV2
14	51LGJW487NVL		



WOMEN'S QUILTED JACKET

Combat the cold with this all-weather quilted jacket in a tapered fit. Features thermal insulation, heat-welded panels, high neck and side pockets. With geometric graphic detail to the inner lining and upper back, sports zippers and Land Rover wordmark to sleeve. Water-resistant with DWR® coating.

Navy - \$250

8	51LGJW486NVI	16	51LGJW486NVM
10	51LGJW486NVJ	18	51LGJW486NVN
12	51LGJW486NVK	20	51LGJW486NV2
14	51LGJW486NVL		



WOMEN'S APPAREL



WOMEN'S WORDMARK T-SHIRT

A cotton elastane jersey T-shirt in our new tapered fit. Features subtle Land Rover wordmark to the chest, twin-needle stitching, and a side tab with Land Rover perforation detailing.

Navy - \$50

8	51LGTW484NVI	16	51LGTW484NVM
10	51LGTW484NVJ	18	51LGTW484NVN
12	51LGTW484NVK	20	51LGTW484NV2
14	51LGTW484NVL		



NECK WARMER

Ward off winter with this multifunctional unisex Neck Warmer. Made from performance poly-elastane, with topography graphic and Land Rover wordmark to the front.

Navy - 51LGSF459NVA
\$30



GIFTS & LIFESTYLE

From high-performance pens to classic collectibles, gift beyond the ordinary with our exclusive range of Land Rover lifestyle accessories.

1. LANYARD

A smart lanyard with contrast grey leather trim and lobster clasp. Features geometric graphic detail to one side and Land Rover wordmark to the other.

Navy - 51LGGF470NVA
\$10

2. PERFORATED LEATHER LOOP KEYRING

A hard-wearing loop keyring made from fine leather. Features debossed Land Rover wordmark and perforation detailing, with bamboo colour stitching.

Navy - 51LGKR468NVA
Ivory - 51LGKR468IVA
\$30

3. NYLON WALLET

Textured wallet with Land Rover wordmark and chamfering stitch detail. Features contrast grey interior with space for three cards and a coin pocket.

Navy - 51LGGF465NVA
\$70

4. MATTE CERAMIC TRAVEL MUG

This double-walled ceramic travel mug features the Land Rover wordmark and silicone band around the middle.

Navy - 51LGMG491NVA
\$30

5. MATTE STONEWARE MUG

Branded stoneware mug with a robust construction and a matte Navy finish. Features Land Rover wordmark and geometric graphic detail.

Navy - 51LGMG474NVA
\$24

6. WATER BOTTLE / STAINLESS STEEL TRAVEL FLASK

Food grade travel flask with easy-grip surface. Features Land Rover wordmark and geometric graphic detail.

Navy - 51LGGF460NVA
\$50

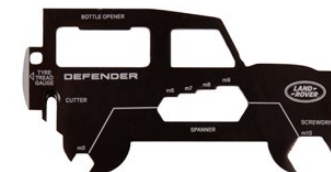




LAND ROVER iPhone XS COVER
 iPhone case featuring geometric graphic detail and Land Rover wordmark. Made from hard plastic with a rubberised matte finish.
 Navy - 51LGP521NVA
 \$30



LEATHER iPhone XS CASE
 Leather iPhone case, featuring foil Land Rover wordmark.
 Navy - 51LGP519NVA
 \$60



DEFENDER MULTI TOOL
 Black steel credit card sized multi tool crafted into a Defender silhouette. Features a range of practical tools including tyre tread gauge.
 Black - 51LDTT619NVA
 \$24



USB BATTERY POWER CHARGER
 Anodized aluminum USB power charger with laser-engraved Land Rover wordmark and geometric graphic detail. Includes 3-in-1 cable with micro, lightning and type C connectors. 8000mAh external battery.
 Navy - W 74mm H 150mm D 11.8mm
 51LGP473NVA
 \$70



LEATHER WRAPPED iPhone CABLE
 USB cable for iPhone with leather casing in Navy. Includes 3-in-1 cable with micro, lightning and type C connectors. With Land Rover wordmark and oval badge on the connectors. MFI certified.
 Navy - 51LGP495NVA
 \$50



TRAVEL MUG STAINLESS STEEL
 This stainless steel travel mug features an easy to grip silicone band around the middle and Terrain Response® branding.
 Navy - 51LGMG915NVA
 \$30



RELIEF MAP TOTE BAG

Reusable canvas tote bag with topography graphic in contrast navy. Features Land Rover wordmark to the front.

Ecru - 51LGLU461WTA
\$10



NOTE BOOK LARGE A5

A notebook to travel with. Featuring Land Rover wordmark and perforation detailing to the front cover. With matching elastic strap and bookmark ribbon.

Navy - 51LGNB517NVA
\$24



LAND ROVER SOLAR WATCH

A new generation solar-powered chronograph with 3 auxiliary sub-dials. Fitted with high-resistance mineral glass and a rubber strap for active use. Features power reserve indicator, orange detailing and Land Rover wordmark. Supplied in Land Rover presentation box.

Black - 51LHWM976BKA
\$550



RANGE ROVER RIDER RIDE ON

This ride-on car with working front and rear LED lights features low-noise tires and a soft-touch seat for comfort. Suitable for children aged 18-36 months. Lights powered by 3 x AA batteries (not included).

White - 51LDTY926WTA

Red - 51LDTY926RDA

\$310





LUGGAGE

Our state-of-the-art luggage is made for exploring new lands and new opportunities. When the adventure never ends, it's the place to start.



NYLON WEEKENDER BAG

Whatever you're packing for, you'll be well prepared with this Nylon Weekender Bag. This versatile bag with padded shoulder strap, internal pockets and compartments, features Land Rover chamfering and wordmark branding to the front panel and is finished with bamboo colour trim and zippers. Navy - 51LGLU462NVA \$180

NYLON BRIEFCASE

All-purpose briefcase with 16" protective laptop sleeve. Features quilted panelling on both sides, bamboo colour trim and Land Rover chamfering, with wordmark to the front panel and padded shoulder strap. Navy - 51LGLU464NVA \$160

NYLON BACKPACK
Versatile backpack with internal organiser and 16" protective laptop sleeve. Features quilted panelling on both sides, bamboo colour trim and zip-pulls, with Land Rover chamfering and wordmark to the front. Navy - 51LGLU463NVA \$140





LAND ROVER BUSINESS HARD CASE

Taking design cues from our Land Rover skid plate, this business case in Graphite Grey is ready for whatever the workday brings. A polycarbonate shell, an aluminum frame and TSA-approved locks mean important documents are always kept secure. An insert badge to the front and a woven wordmark to the inner lining add style, while more practical touches include several internal compartments and an extendable handle.

Business - 51LELU261GYA
W 45cm H 35cm D 20cm
Graphite Grey - \$349

LAND ROVER HARD CASE SUITCASES

Taking design cues from our Land Rover skid plate, these hard cases in Graphite Grey are as resilient and adventure-ready as our vehicles. A polycarbonate shell, aluminium frame and TSA-approved locks mean you'll always travel securely. An insert badge to the front and a woven wordmark to the inner lining add style, while practical touches include several internal compartments and multidirectional tour wheels.

Small - 51LELU262GYA
W 35cm H 55cm D 23cm
Graphite Grey - \$450

Large - 51LELU264GYA
W 50.6cm H 73cm D 34cm
Graphite Grey - \$600

Medium - 51LELU263GYA
W 46.5cm H 68cm D 26cm
Graphite Grey - \$550

SUNGLASSES

With anti-glare technology and high UV protection, our Land Rover branded sunglasses mean you can look forward to every horizon.



1. LAND ROVER NEVIS SUNGLASSES

Purposely designed to reduce visual glare, these next generation Nevis Sunglasses feature a subtle Land Rover wordmark to the frame.

Gunmetal - 51LEGM373GYA

\$250 LIMITED AVAILABILITY



3. LAND ROVER USK SUNGLASSES

A sophisticated style suited for all occasions, these Usk Sunglasses feature a modern eye shape with the Land Rover wordmark to the lens.

Black - 51LEGM379BKA

\$250 LIMITED AVAILABILITY



4. LAND ROVER SCAFELL SUNGLASSES

Ideal for the rugged adventurer, the Scafell Sunglasses have a monobloc construction with a fitted wrap-around frame and OBE hinges.

Blue - 51LEGM376BLA

\$250 LIMITED AVAILABILITY



2. LAND ROVER SNOWDON SUNGLASSES

Utilizing innovative matte acetate materials and protective polarized OBEX™ mirror lenses, these Snowdon Sunglasses have been crafted for an active, outdoor lifestyle.

Tortoiseshell - 51LEGM377BNA

\$300 LIMITED AVAILABILITY



5. LAND ROVER MERRICK SUNGLASSES

Made from premium acetate and crafted with a flex hinge and mirror lenses. These components work to create a sleek and masculine frame. The ideal outdoors accessory.

Black - 51LEGM371BKA

\$300 LIMITED AVAILABILITY

RANGE ROVER COLLECTION
REFINEMENT REDEFINED



Refinement is all in the details. It's a story told in the quality of our materials and our sophisticated design. Something you can see in our exclusive range of lifestyle accessories, inspired by the luxurious Range Rover interiors. It's more than refinement. It's refinement redefined.



RANGE ROVER WATCH

A refined watch inspired by the classic Range Rover marque. Featuring black sun-ray dial and Milanese strap. Ultra-thin black gloss design with quartz movement. Supplied in high gloss piano black branded watch box. Water-resistant to 5 ATM. Black - 51LHWM973BKA
\$700





RANGE ROVER LEATHER WALLET

An elegant cross-grained leather wallet in Deep Garnet with chevron print to the inner lining. Features Range Rover Rotary Dial detail with debossed wordmark to the inside.

Deep Garnet - 51LGLG419BUA
\$140

RANGE ROVER CARD CASE

Cross-grained leather card case in Deep Garnet with four card slots and a centre note compartment. Features Range Rover Rotary Dial detail with debossed wordmark to the reverse.

Deep Garnet - 51LGLG420BUA
\$90

RANGE ROVER CUFFLINKS

A refined set of whale-back cufflinks inspired by the Range Rover Rotary Dial and crafted from milled steel.

With a Black nickel finish and debossed wordmark.
Black - 51LGCL417BKA
\$120



UNISEX RANGE ROVER CAP

Stylish Range Rover headwear. Created in tandem with our vehicle design studio. Sharp black trim. Chevron stitching. 3D metal effect branding. Fully adjustable with high quality gunmetal hardware.

Black - 51LHCH961BKA
\$60



RANGE ROVER SUNGLASSES - RRS103 SILVER

Lightweight aviator-style sunglasses in Silver. Machined from a single sheet of Japanese Beta-titanium, with NXT® polarized lenses for ultimate UV protection and colour clarity. Other styles available.

Silver - 51LGGM523SLA
\$550



RANGE ROVER LEATHER WEEKENDER BAG

True style is never overstated. This classic Weekender Bag is fashioned from supple full-grained leather. Featuring a discreet Range Rover wordmark, soft interior lining and a detachable shoulder strap. Finished with leather zippers, gunmetal hardware and trim.

Black - 51LGLU455BKA
\$790



RANGE ROVER LEATHER TOTE BAG
 Style, simplicity, sophistication. It all comes to the fore with this cross-grained leather tote bag in Deep Garnet. Featuring a chevron print lining with an easy-to-reach internal key pocket, its design is understated yet unmistakable. Subtle branding includes a Range Rover Rotary Dial detail with magnetic closure, and a debossed wordmark to the reverse.
 Deep Garnet - 51LGLX423BUA
 \$590

RANGE ROVER LEATHER FLAP PURSE
 Cross-grained leather purse in Deep Garnet with eight card slots and an internal zip pocket. Features Range Rover Rotary Dial detail with concealed press stud, and debossed wordmark to the reverse.
 Deep Garnet - 51LGLG422BUA
 \$190

MONTEGRAPPA FOR RANGE ROVER PEN
 Made from a robust polymer with a sleek Black finish, this premium pen features the technical detailing of our Sports Utility Vehicle. Designed by Land Rover and made by Montegrappa, the first Italian designer of superior writing instruments, each pen is a fine example of craftsmanship and style.
 Black - 51LFPN376BKA
 \$790



RANGE ROVER UMBRELLA
 Your cover for all conditions. This wind-tested Range Rover Umbrella features a black leather handle with debossed Range Rover wordmark, spring-loaded automatic opening and polycotton canopy.
 Black - 51LEUM144BKA
 \$120



RANGE ROVER ROUND KEYRING
 Crafted from milled steel, this distinctive keyring is inspired by the Range Rover Rotary Dial. With a Black nickel finish and debossed wordmark to the outer ring edge.
 Black - 51LGKR416BKA
 \$90

CLOTHING SIZE GUIDE

MEN'S	CHEST (CM)
XS	88
S	92
M	97
L	102
XL	107
XXL	112
XXXL	117
XXXXL	122

WOMEN'S	BUST (CM)
8	77
10	82
12	87
14	92
16	97
18	102
20	107

Product availability and pricing are subject to change. All copy and images remain the copyright of Jaguar Land Rover Canada ULC. Correct at time of publication; subject to availability and market; Jaguar Land Rover Canada ULC reserve the right to remove or change specification of items in the range at any time.





THE ABOVE AND BEYOND COLLECTION



ABOVE & BEYOND



DESIGNED TO ENDURE

The new Land Rover Defender goes above and beyond. And now there's a collection to match. A collaboration between Land Rover and Musto that's rugged and innovative, it's designed to take you anywhere and take on anything. Made from strong and resilient materials. Crafted with technical precision. And tested in real-world conditions. It's what endurance is made of.

RODINIA HYBRID JACKET

SHIELDS

Showerproof and versatile, this softshell jacket is a defence against the elements. Designed with quick burst zipper technology that allows you to remove the sleeves in a single movement, turning it from jacket to vest in seconds. Featuring fast-drying Durable Water Repellent (DWR®) treated fabric and PrimaLoft® eco-insulation for compressible warmth.

MEN'S RODINIA HYBRID JACKET

Black - \$590

LIMITED AVAILABILITY

XS	51LGJM371BKB	XL	51LGJM371BKF
S	51LGJM371BKC	XXL	51LGJM371BKG
M	51LGJM371BKD	XXXL	51LGJM371BKH
L	51LGJM371BKE		

Reflective prints feature glass bead technology.



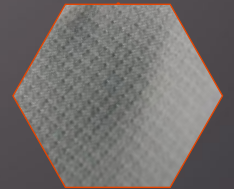
Reverse coil, bi-colour YKK zipper.



Quick burst zippers for easy sleeve removal.



Durable Water Repellent (DWR®) coating.



Constructed from ultra-resistant Schoeller® stretch fabric.



Concealed pocket for sleeve storage.



PrimaLoft® Black Eco recycled insulation.

WOMEN'S RODINIA HYBRID JACKET

Black - \$590

8	51LGJW377BKI	14	51LGJW377BKL
10	51LGJW377BKJ	16	51LGJW377BKM
12	51LGJW377BKK	18	51LGJW377BKN



MEN'S & WOMEN'S JACKET FEATURES

- Constructed from abrasion-proof Schoeller® stretch fabric.
- Durable Water Repellent (DWR®) coating allows water to bead and run off for faster drying times.
- PrimaLoft® Black Eco recycled insulation for eco-friendly, lightweight and compressible warmth.
- Ergonomic YKK zipper with reverse coil construction.
- Reflective prints feature glass bead technology for enhanced visibility.
- Quick burst zipper technology transforms jacket into vest.
- Concealed pocket for storing removable sleeves.



SCORIA TECH MID LAYER

Cold weather comfort. Casual style. The ultimate mid layer for outdoor activities. Rugged and warm with a water-repellent finish. Featuring a 4-way stretch construction for unrivalled flexibility and comfort. Complete with orange shock-cords to the hood.



MEN'S SCORIA TECH
MID LAYER

MEN'S SCORIA TECH MID LAYER

Grey - \$270

XS	51LGHM372GYB	XL	51LGHM372GYF
S	51LGHM372GYC	XXL	51LGHM372GYG
M	51LGHM372GYD	XXXL	51LGHM372GYH
L	51LGHM372GYE		

MEN'S & WOMEN'S JACKET FEATURES

- Durable Water Repellent (DWR®) coating.
- Glass bead technology.
- 4-way stretch construction.



WOMEN'S SCORIA TECH
MID LAYER

WOMEN'S SCORIA TECH MID LAYER

Grey - \$270

8	51LGHW378GYI	14	51LGHW378GYL
10	51LGHW378GYJ	16	51LGHW378GYM
12	51LGHW378GYK	18	51LGHW378GYN



TEPHRA GORE-TEX SHELL PARKA

Endure the extremes. The tech-packed, triple-layer parka is the ultimate protective garment. Featuring a precision-engineered construction that provides superlative wind and waterproof performance.



MEN'S TEPHRA GORE-TEX SHELL PARKA

MEN'S TEPHRA GORE-TEX SHELL PARKA

Black - \$700

LIMITED AVAILABILITY

XS	51LGM368BKB	XL	51LGM368BKF
S	51LGM368BKC	XXL	51LGM368BKG
M	51LGM368BKD	XXXL	51LGM368BKH
L	51LGM368BKE		



WOMEN'S TEPHRA GORE-TEX SHELL PARKA

MEN'S & WOMEN'S JACKET FEATURES

- 3-layer GORE-TEX laminate provides superior weatherproofing and breathability.
- Durable Water Repellent (DWR®) coating.
- Water-resistant YKK zippers with AquaGuard® (Coil).
- Embedded COHÆSIVE™ cord locks for easy, one-handed adjustment.
- Cargo pockets feature water deflecting top closures.
- Reflective prints feature glass bead technology for enhanced visibility.
- Two-way adjustable hood.

WOMEN'S TEPHRA GORE-TEX SHELL PARKA

Black - \$700

LIMITED AVAILABILITY

8	51LGJW374BKI	14	51LGJW374BKL
10	51LGJW374BKJ	16	51LGJW374BKM
12	51LGJW374BKK	18	51LGJW374BKN



WELDED THERMO JACKET

Insulation meets innovation in this ultrasonic Welded Thermo Jacket. Constructed with PrimaLoft® insulation fused with Aerogel for the performance of natural down. Seamless design. Unsurpassed comfort. And peerless durability in all terrains.



MEN'S WELDED THERMO JACKET

MEN'S WELDED THERMO JACKET
Black - \$700

XS	51LGJM370BKB	XL	51LGJM370BKF
S	51LGJM370BKC	XXL	51LGJM370BKJ
M	51LGJM370BKD	XXXL	51LGJM370BKH
L	51LGJM370BKE		



WOMEN'S WELDED THERMO JACKET

MEN'S & WOMEN'S JACKET FEATURES

- 3-layer waterproof shell fabric with polyester face.
- Equipped with a RECCO® integrated reflective antenna that helps rescue teams locate you in difficult terrain.
- PrimaLoft® Silver insulation provides warmth of natural down without the weight.
- PrimaLoft® Aerogel-lined pocket keeps mobile phones charged for longer.
- Embedded COHÆSIVE™ cord locks for easy, one-handed adjustment.
- Reflective prints feature glass bead technology for enhanced visibility.

WOMEN'S WELDED THERMO JACKET
Black - \$700

LIMITED AVAILABILITY

8	51LGJW376BKI	14	51LGJW376BKL
10	51LGJW376BKJ	16	51LGJW376BKM
12	51LGJW376BKK	18	51LGJW376BKN



LITE GORE-TEX PACKABLE JACKET

Feather-light. Fully storable. This jacket is made from highly breathable GORE-TEX fabric. An articulated construction with fully-taped seams, it ensures superior waterproof protection. A form-fitting jacket for high-intensity activities.



MEN'S LITE GORE-TEX
PACKABLE JACKET

MEN'S LITE GORE-TEX PACKABLE JACKET
Black - \$450

XS	51LGJM369BKB	XL	51LGJM369BKF
S	51LGJM369BKC	XXL	51LGJM369BKG
M	51LGJM369BKD	XXXL	51LGJM369BKH
L	51LGJM369BKE		



MEN'S & WOMEN'S JACKET FEATURES

- Constructed from ultra-breathable GORE-TEX Active fabric.
- Fully waterproof with taped seams.
- Packs away into pocket for easy attachment to belt loops and bags.
- Reflective prints feature glass bead technology for enhanced visibility.
- Durable Water Repellent (DWR®) coating.
- Embedded COHÆSIVE™ cord lock for easy adjustment.



WOMEN'S LITE GORE-TEX
PACKABLE JACKET

WOMEN'S LITE GORE-TEX PACKABLE JACKET
Black - \$450

8	51LGJW375BKJ	14	51LGJW375BKL
10	51LGJW375BKJ	16	51LGJW375BKM
12	51LGJW375BKK	18	51LGJW375BKN



REVERSIBLE BASE LAYER

A Reversible Base Layer that adapts to the seasons. Made with thermal regulating merino fabric on one side and breathable polyester fabric on the other. Featuring flatlocked seams with black reflective prints and glass bead technology for enhanced low-light visibility.



MEN'S REVERSIBLE
BASE LAYER

MEN'S REVERSIBLE BASE LAYER
Grey - \$150

XS	51LGTM373GYB	XL	51LGTM373GYF
S	51LGTM373GYC	XXL	51LGTM373GYG
M	51LGTM373GYD	XXXL	51LGTM373GYH
L	51LGTM373GYE		



MEN'S & WOMEN'S BASE LAYER FEATURES

- Merino fabric provides thermal regulation, wicking and anti-odour properties.
- Reverse side features polyester fabric that's breathable, wicking and fast-drying.
- UPF 30 sun protection.
- Reflective prints feature glass bead technology for enhanced visibility.
- Water-resistant pocket for phone.



WOMEN'S REVERSIBLE
BASE LAYER

WOMEN'S REVERSIBLE BASE LAYER
Black - \$150

8	51LGTW379BKI	14	51LGTW379BKL
10	51LGTW379BKJ	16	51LGTW379BKM
12	51LGTW379BKK	18	51LGTW379BKN

LAND ROVER MUSTO LOGO T-SHIRT

A timeless T-shirt. An iconic accessory. Featuring a distinctive topographic logo and orange piping to the neck. Made from breathable cotton.

FEATURES

- Topographic logo design.
- Features contrast piping.
- 100% soft cotton jersey.



Grey - \$60

S	51LHTM947GMC	XL	51LHTM947GMF
M	51LHTM947GMD	XXL	51LHTM947GMG
L	51LHTM947GME		

LAND ROVER MUSTO LOGO HOODIE

Casual hoodie. Classic design. This stylish mid layer comes in Gunmetal Grey with distinctive orange detailing. Featuring topographic logo to the front. Made from 100% cotton.

FEATURES

- Jersey-lined hood in contrast orange.
- Ideal layer for outdoor activity.
- 100% cotton loop-back fabric.



Gunmetal Grey - \$160

S	51LHHM454GUC	XL	51LHHM454GUF
M	51LHHM454GUD	XXL	51LHHM454GUG
L	51LHHM454GUE		



ABOVE AND BEYOND BEANIE

Simple. Subtle. Essential. A double-layered beanie that offers twice the protection in the great outdoors. Designed with a reflective label and turned-up cuff. Headwear that prepares you for anything.

FEATURES

- Double layered for warmth.
- Comfortable ribbed construction.
- Reflective branded label.

Black - \$40

51LHCH458BKA



ABOVE AND BEYOND SUNGLASSES

Technically proficient sunglasses with cutting-edge design. Made from ultra-light Grilamid Polyamide. Featuring single-mould frames with matte finish and 100% UVA, UVB and UVC protection. Supplied in a durable Land Rover travel case.

Orange lens - \$270

51LGGM945ORA

Brown lens - \$270

51LGGM944MXA

FEATURES

- Polarized lenses with matte-finish frames.
- Constructed with UV400 filter.
- Integrated grip on temples.
- Rugged outdoor case featuring Above and Beyond zippers.
- Also available with Smoked Grey frames and Brown lenses.



ABOVE AND BEYOND BLIZZARD COAT

PROTECTS

The ultimate defence for dogs. This technical outer layer protects dogs against the cold and the wet. Features weatherproof outer made from black hexagon nylon. With 4 layers for superior warmth, and 4 reflective points for low-light visibility. Designed for easy adjustment and a precision fit.

FEATURES

- Tail opening.
- Leather strap.
- Reflective stitching.

Black and Orange

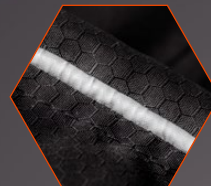
AVAILABLE JANUARY 2021

S	51LGPT938MXC - \$80
M	51LGPT938MXD - \$90
L	51LGPT938MXE - \$100
XL	51LGPT938MXF - \$110



3 point adjustment for perfect fit.

Reflective piping for low-light visibility.



Silicone moulded badge.



Waterproof nano-treated outer.



Micro-fleece base layer for superior warmth.



Underbody protection.



ABOVE AND BEYOND DOG HARNESS

Next generation harness. Designed for comfort and made with hard-wearing components. Featuring fully-padded body with breathable mesh lining. Includes sports buckle, padded traffic handle and rust-resistant nickel D-ring.

FEATURES

- High-resistance hexagon jacquard nylon.
- Fully adjustable for a secure fit.
- Removable chest pad for ease of movement.
- Reflective print and piping.
- Attachment loops for accessories.

Black and Orange
AVAILABLE JANUARY 2021

S	51LGPT937MXC - \$60
M	51LGPT937MXD - \$70
L	51LGPT937MXE - \$80



ABOVE AND BEYOND ADJUSTABLE DOG LEASH

Designed for visibility. Woven for endurance. This adjustable dog leash with bungee cord is created for all-round versatility. Features a padded handle, Land Rover branding and reflective piping for visibility in low light.

FEATURES

- Traffic handle for close control.
- Shock absorbing cord.
- Land Rover utility clip on handle.

Black and Orange - \$50
AVAILABLE JANUARY 2021

51L6PT939MXA



ABOVE AND BEYOND PORTABLE PET BOWL

A lightweight foldaway solution for dogs on the move. 1.5 litre capacity ideal for holding food and liquids. Made with rugged black nylon straps. Stands upright. Packs away easily. Convenient to transport and clean.

FEATURES

- Lightweight solution for feeding and drinking.
- Rolls up easily into bag.
- Sturdy, water-resistant construction.

Black and Orange - \$30
AVAILABLE JANUARY 2021

51L6PT942MXA



ABOVE AND BEYOND REFLECTIVE DOG COLLAR

Modern collar. Comfort fit. A technical dog collar for outdoor adventures. Features secure construction, with a nylon outer weave for endurance, and neoprene padding for comfort. Designed with reflective orange piping and handy utility clip.

FEATURES

- Made from hard-wearing materials.
- Designed for maximum comfort.
- Hook and loop adjustment.
- Reflective stitching for increased visibility in low light.

Black and Orange
AVAILABLE JANUARY 2021

S 51L6PT940MXC - \$30
M 51L6PT940MXD - \$34
L 51L6PT940MXE - \$38



ABOVE AND BEYOND DOG TOY

A toy made to go the distance. Featuring a detailed tread pattern replicating the Land Rover tire. Safe, durable and designed to gently clean teeth.

FEATURES

- Made from reinforced material.
- Bouncy, lightweight and hard-wearing.

Black - \$25
AVAILABLE JANUARY 2021

51L6PT941BKA



MIROVIA SEAM SEALED BACKPACK

HAULS

The go-anywhere, take-anything backpack. Constructed from 500D PVC material chosen for its uncompromising quality and significant strength. Designed with a large roll-top and heat-sealed seams to keep moisture out. Complete with HYPALON™ lashing points and a release valve for compact packing.

FEATURES

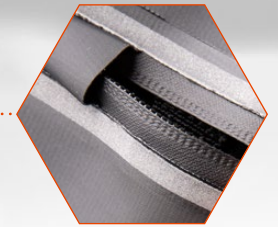
- 500D PVC material and heat-sealed seams defend contents against water damage.
- 25 litre main compartment with computer pocket for safer storage.
- Exterior features HYPALON™ lashing points.
- Finished with reflective print for superior visibility.
- Hard-wearing valve releases pressure for compact packing.

Black - \$230

51LGLU385BKA



Features robust 500D PVC material and heat-sealed seams.



25 litre main compartment with computer pocket.



Stitched HYPALON™ lashing points.



Integrated release valve aids compact packing.





ABOVE AND BEYOND FLASK

SUSTAINS

This robust, double-walled steel flask keeps liquids cold for up to 24 hours and hot for up to 15 hours. Featuring an easy-grip design that can be held with gloves. Durable and rugged with a nylon cord for easy attachment.

Black - \$70

51L6GF393BKA

KEEPS LIQUIDS COLD FOR UP TO

24hrs

KEEPS LIQUIDS HOT FOR UP TO

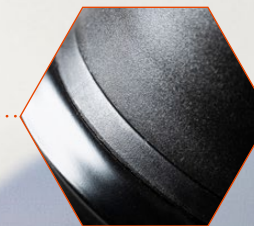
15hrs

CAPACITY

500ml



Features easy-pour lid with removable drinking cup.



Waterproof seals for secure transportation of liquids.



Double-walled steel flask means liquid maintains its temperature for longer.



Nylon cord for easy attachment.



Ergonomic barrel designed for superior grip.



LEROVA TRAVEL WALLET

This durable travel wallet is built to safeguard your essentials from the elements. 23cm x 3cm x 12cm.

FEATURES

- Rugged, water-resistant construction.
- Protects your items from water damage.
- Attaches to bags and belt loops with hard-wearing carabiner.

Black - \$80

51LGLU383BKA



ABOVE AND BEYOND WATER BOTTLE

A technical water bottle with easy-grip exterior. Constructed from Borosilicate glass that is resistant to thermal shock, it can be easily attached to travel bags. Super durable and expedition friendly.

FEATURES

- Silicone sleeve.
- Liquid volume marker.
- Watertight lid.
- Anti-slip base.

Black - \$60

51LGGF392BKA



ABOVE AND BEYOND BLUETOOTH SPEAKER

Waterproof. Travel-ready. This multi-function Bluetooth speaker is compact enough to take anywhere. And tough enough to take the knocks. 18cm x 5cm x 8cm.

FEATURES

- Reinforced portable construction.
- Impact resistant and dustproof.
- Carabiner attaches to bags.
- NFC pairing. USB charging.
- Doubles as power bank and mobile speakerphone.
- 12 hour battery.
- Waterproof to 1 metre IP67.

Black - \$160

51LGGF395BKA



Hooks on to bag with a carabiner.



ABOVE AND BEYOND CAP

Enhanced breathability and low-light visibility. This quick-drying cap is designed to keep you comfortable, and put your performance first come rain or shine.

FEATURES

- UPF 40 sun protection.
- Open mesh side panels.
- 3M reflective accents and branding.
- Quick-dry fabrics and ventilation.
- Reflective print to the rear.

Black - \$60

51LGCH380BKA



ABOVE AND BEYOND MICROFIBRE ACTIVE TOWEL

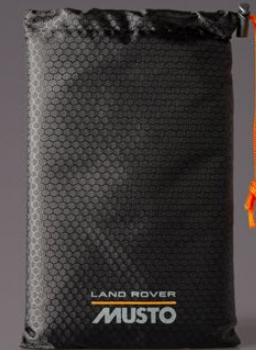
Pack light. Stay dry. This branded microfibre active towel is made from a high-wicking polyester blend that's light, fast-drying and easy to store.

FEATURES

- High-wicking polyester blend.
- Branded print to one side and orange trim.
- Easy storage in a drawstring pouch.
- Unfolded Size: 110cm x 65cm.
- Folded Size: 16cm x 20cm.

Black - \$60

51LGGF386BKA



ABOVE AND BEYOND MULTI TOOL

ADAPTS

Does everything. Goes anywhere. This handy tool has been designed for hard-wearing use both on and off road. Features 9 individual tools made from reinforced stainless steel.*

FEATURES

- Spring-action pliers.
- Knife with safety lock.
- Bottle opener.
- Serrated blade.
- Phillips screwdriver.
- Can opener.

Orange - \$80

51LGGF388BKA



ABOVE AND BEYOND FOLDING SHOVEL

A tool to travel with. The all-terrain shovel folds down into a portable size. Its sturdy construction and serrated edge make light work of the toughest tasks. Finished with laser engraved branding.

FEATURES

- Reinforced folding shovel designed for easy storage.
- Easy-grip.
- Dual edged for multi-purpose use.
- Rigid handle for leverage and durability.

Black - \$60

51LGGF387BKA



LAND ROVER X ELLIOT BROWN
HOLTON PROFESSIONAL WATCH

ENDURES

Designed by experts. Used by professionals. This exclusive timepiece, created in collaboration with premium English watchmaker Elliot Brown, offers precision timekeeping and unrelenting durability. Featuring scratch-resistant sapphire crystal, unidirectional bezel and luminous dial and hands. With two straps for all-terrain versatility. Shock resistant. Triple-sealed for water protection. And capable of prolonged exposure to the elements. It's a watch that knows no limits.

FEATURES

- 43mm case.
- Tested in water at 200m.
- Screw-down triple-sealed crown.
- Rubber strap resistant to temperature extremes.
- Super-LumiNova luminous hands and dial markings.

Black - \$998

51LHWM992BKA



High grip uni-directional bezel.



Ultra shock-resistant casing.



Technical webbing strap.



Fitted soft rubber strap.

TESTED IN WATER AT

200m

SHOCK-RESISTANT TO

5,000G

CASE

43mm





LEGO® TECHNIC™ LAND ROVER DEFENDER 90

INSPIRES

Iconic. Authentic. Experience legendary vehicle design first hand with this LEGO® Technic™ Land Rover Defender. Developed in partnership with LEGO®. Suitable for age 11+. 2,573 pieces. Measures over 22cm high, 42cm long and 20cm wide.

Green - \$250

51LGGF400MXA



Bodywork features Land Rover logo, removable roof rack with storage box, pannier, ladder and traction mats, opening doors, hood and tailgate, plus a detailed interior.



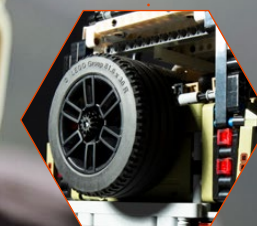
Lift the hood to see the detailed in-line 6-cylinder engine with moving pistons.



Functions include working steering, All Wheel Drive with 3 differentials, independent suspension on both axles and a working winch.



4-speed sequential gearbox and gear selector with 2 levers for engaging high or low gear.



Turn the rear-mounted spare wheel to open the tailgate.

DEFENDER 110 X SCALE MODEL 1:43

Collectors' edition replica of the new Land Rover Defender 110 X in Gondwana Stone. High quality diecast model made from zinc alloy.

Gondwana Stone - \$100

AVAILABLE JANUARY 2021

51LGDC953BNY



CLOTHING FEATURES GUIDE



RODINIA HYBRID JACKET



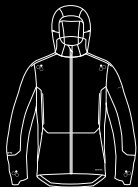
SCORIA TECH MID LAYER



TEPHRA GORE-TEX SHELL PARKA



WELDED THERMO JACKET



LITE GORE-TEX PACKABLE JACKET



REVERSIBLE BASE LAYER



CLOTHING SIZE GUIDE

MEN'S	CHEST (CM)
XS	79 - 84
S	86 - 91.5
M	94 - 99
L	101.5 - 106
XL	109 - 114
XXL	117 - 122
XXXL	125 - 130

WOMEN'S	BUST (CM)
8	78.5 - 81
10	82 - 86
12	87 - 91.5
14	92 - 96.5
16	97 - 101.5
18	102 - 106.5

Product availability and pricing are subject to change. All copy and images remain the copyright of Jaguar Land Rover Canada ULC. Correct at time of publication; subject to availability and market; Jaguar Land Rover Canada ULC reserve the right to remove or change specification of items in the range at any time.



THE HERITAGE COLLECTION



ABOVE & BEYOND



THE ICON LIVES ON

In 1948, Maurice Wilks and his brother Spencer unveiled the world's first Land Rover. Over 70 years later, what began life as a sketch in the sands of Anglesey has become an international symbol of adventure. An icon that lives on with our Heritage Collection. Apparel and lifestyle accessories inspired by Land Rover's rich heritage, and made to last for generations to come.

MEN'S HERITAGE GRAPHIC T-SHIRT

100% cotton T-shirt with Heritage logo to the chest. Features back neck woven label and wordmark side tab.

Grey Marl - \$70

XS 51LFTM946GMB	XL 51LFTM946GMF
S 51LFTM946GMC	XXL 51LFTM946GMG
M 51LFTM946GMD	XXXL 51LFTM946GMH
L 51LFTM946GME	XXXXL 51LFTM946GM3



MEN'S HERITAGE FLANNEL SHIRT

Heritage in every stitch. This 100% brushed cotton shirt in Grey features an original check design with faux horn buttons, button down collar, two chest pockets and branded heritage tab.

Grey - \$120

XS 51LFSM948GYB	XL 51LFSM948GYF
S 51LFSM948GYC	XXL 51LFSM948GYG
M 51LFSM948GYD	XXXL 51LFSM948GYH
L 51LFSM948GYE	



MEN'S HERITAGE POLO SHIRT

100% cotton piqué polo shirt in Grey Marl with contrast section to the upper chest. Features rib collar and cuffs with contrast tipping and wordmark side tab. Heritage logo to sleeve.

Grey Marl - \$90

XS 51LFPM950GMB	XL 51LFPM950GMF
S 51LFPM950GMC	XXL 51LFPM950GMG
M 51LFPM950GMD	XXXL 51LFPM950GMH
L 51LFPM950GME	





HERITAGE CANVAS WALLET

A classic wallet with six card slots and a slip for the Defender Multi Tool. Features laser etched Heritage logo and white stitching. Defender Multi Tool sold separately.
Navy - 51LGGF481NVA
\$80



DEFENDER MULTI TOOL

Black steel credit card sized multi tool crafted into a Defender silhouette. Features a range of practical tools including tire tread gauge.
Black - 51LDTT619NVA
\$24





LAND ROVER CLASSIC WATCH
A new take on a Heritage classic. Featuring a rotating outer bezel that can be aligned to track a second time zone. With luminous hands and indices, Land Rover wordmark, date aperture and textured Italian leather strap. Water-resistant to 10 ATM. Supplied in Land Rover presentation box.
White - 51LHWM975WTA
\$330



LAND ROVER HERITAGE WATCH
A watch that takes you back. Inspired by original pilot designs, it features chronograph sub-dials, Heritage logo and leather strap with stitching detail. Complete with date aperture, matte black dial and ion-plated case. Supplied in Land Rover presentation box.
Black - 51LHWM977BKA
\$450



HERITAGE BOTTLE OPENER KEYRING

Handy keyring wrapped in fine leather with flip-out bottle opener. Features debossed Heritage logo, split ring and a lobster clasp.

Brown - 51LFKR360BNA
\$40



ADVENTURE BEAR

A loyal companion for all of your little one's expeditions. Land Rover Adventure Bear dressed in oval badge shirt, shorts and explorer's hat with messenger bag.

Brown - 51LDTY913BNA
\$70



LAND ROVER ICON BOOK

The official Land Rover book covering the Series and Defender models. Containing ten chapters that celebrate these iconic vehicles and the people who drive them.

200 pages - 51LFGF412NAA
\$120



HERITAGE PIN BADGE SET

Brass pin badges featuring a range of iconic Land Rover symbols. Includes Series I, Classic Range Rover, Heritage logo, oval badge and Heritage Station Wagon logo. Includes presentation tin.

Set of 5 - 51LFGF362NVA
LIMITED AVAILABILITY
\$40

LAND ROVER

LEATHER WEEKEND BAG

Packed with versatility. Made from highly supple oil-washed natural-grain brown leather, this Leather Weekend Bag is flexible in every sense. Ideal for day trips or extended excursions, it features sturdy handles, a detachable padded shoulder strap and a practical zipper pocket.

Includes protective dust bag.

W 40cm H 18cm

Brown - 51LELU364BNA

\$520

HERITAGE DUFFLE BAG

An over-the-shoulder drawstring duffle bag in Navy with white trim. Made from hardwearing canvas, this bag features an embroidered Heritage logo to the front.

H 50cm D 30cm

Navy - 51LFLG361NVA

\$190



THE HERITAGE COLLECTION



HERITAGE TOTE BAG

Carry the enduring spirit of Land Rover with you wherever you go. 100% cotton reusable canvas tote bag with Series I graphic to the front.

White - 51LFLU046WTA

\$10





1 HUE NOTEBOOK

SMALL A6

Made with eco-friendly stone paper that's tough, tear-resistant, greaseproof and waterproof, this A6 notebook features the HUE 166 number plate logo. Includes a HUE technical drawing to the inside.

Grasmere Green - 51LDNB561GNA
\$6

2 HUE NOTEBOOK AND ORGANIZER

Take note. This HUE canvas notebook and organizer has a grey contrast stitch and versatile pocket storage. Features a HUE 166 woven badge.

Grasmere Green - 51LDNB562GNA
\$30



MEN'S HUE GRAPHIC T-SHIRT

A 100% cotton T-shirt with a technical drawing of the famous HUE 166 on the chest.

Black - \$50

LIMITED AVAILABILITY

S	51LDTM558BKC	XXL	51LDTM558BKG
M	51LDTM558BKD	XXXL	51LDTM558BKH
L	51LDTM558BKE	XXXXL	51LDTM558BK3
XL	51LDTM558BKF		

Grey - 51LDTM558GY

\$50

White - 51LDTM558WT

\$50



HUE 166 KEYRING

Classic HUE 166 number plate logo keyring in polished chrome.

Black - 51LDKR914BKA

\$30



HUE TEDDY BEAR

Children's soft toy dressed in Heritage HUE 166 overalls and tweed flat cap.

Sporting a Land Rover logo, he makes a popular gift for any child. Suitable for all ages with appropriate adult supervision.

Brown - 51LDTY618BNA

\$70



**BARBOUR TARTAN
DOG HARNESS**

Stylish and functional dog harness featuring Barbour for Land Rover Tartan.

\$60
LIMITED AVAILABILITY

L 51BEPT287MXE



**BARBOUR TARTAN
DOG COLLAR**

Barbour for Land Rover Tartan collar lined with leather. Features aged brass-plated metal fittings.

\$80

S 51BEPT284MXC
M 51BEPT284MXD
L 51BEPT284MXE



**BARBOUR TARTAN
DOG LEAD**

Made from real leather, this lead features contrast top stitching and aged brass-plated fittings.

One size - 51BEPT285MXA
\$110



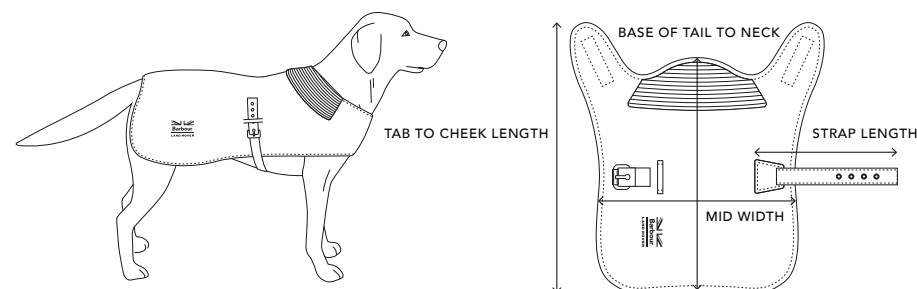
BARBOUR WAX DOG COAT

Keep your best friend safe from the elements in this water-resistant, wax jacket. Made with Barbour for Land Rover Tartan, it features a collar that lifts for extra protection.

\$90
LIMITED AVAILABILITY

S 51BEPT289OLC
M 51BEPT289OLD
L 51BEPT289OLE

DOG COAT SIZE GUIDE



SIZE	S	M	L	XL
BREED	Terrier	Spaniel	Retriever	Pointer
NECK TO TAIL	35cm	45cm	55cm	66cm
MID WIDTH	30cm	38cm	46cm	55cm
TAB TO CHEEK LENGTH	44cm	57cm	70cm	82cm
STRAP LENGTH	26cm	34cm	43cm	52cm

DOG COLLAR SIZE GUIDE

SIZE	S	M	L
COLLAR MEASUREMENTS	14mm x 40cm	19mm x 53cm	25mm x 63.5cm
TO FIT NECK	27.5cm x 35.5cm	36cm x 46mm	47cm x 56.5cm

CLOTHING SIZE GUIDE

UK MEN'S	XS	S	M	L	XL	XXL	XXXL	XXXXL
CHEST (CM)	88	92	97	102	107	112	117	122

Product availability and pricing are subject to change. All copy and images remain the copyright of Jaguar Land Rover Canada ULC. Correct at time of publication; subject to availability and market; Jaguar Land Rover Canada ULC reserve the right to remove or change specification of items in the range at any time.

FIND US AT YOUR LOCAL LAND ROVER
AUTHORIZED RETAILER



ABOVE & BEYOND

Jaguar Land Rover Canada ULC
75 Courtneypark Drive West, Unit 3 Mississauga, ON L5W 0E3
© 2021 Jaguar Land Rover Canada ULC